

Citu valstu pieredze jūras un sauszemes funkcionālās sasaistes nodrošināšanā

Situācija pasaulē

- MSP tiek izstrādāti vairāk nekā 30 pasaules valstīs, bet 9 valstu apstiprinātie plāni jau nosedz 9% no pasaules EEZ.
- Nākamā 10-gadē vēl ap 50 valstu plāni, kas nosegtu pusi no EEZ
- <http://www.unesco-ioc-marinesp.be/>

Countries that Have Implemented MSP and Are Currently Revising First-Generation Plans	Countries that Will Approve Marine Spatial Plans by 2025	Countries that Could Also Approve Marine Spatial Plans by 2025
<ul style="list-style-type: none"> • Belgium • The Netherlands • Norway (Barents and Norwegian Seas) • USA (Massachusetts State Waters) 	<ul style="list-style-type: none"> • USA (Continental, Hawaiï, Alaska) • Canada (East and West Coast EEZs) • United Kingdom [England (All 10 regions), Scotland, Wales, N Ireland] 	<p>ARCTIC OCEAN</p> <ul style="list-style-type: none"> • Russia • Greenland • Canada
<p>Countries that Have Approved MSP Plans</p>	<p>OTHER COASTAL COUNTRIES OF EU</p> <ul style="list-style-type: none"> • Ireland • Sweden • Denmark • Finland • Poland • Estonia • Latvia • Lithuania • France (Continental) • Portugal (Azores) • Spain • Italy • Greece • Cyprus • Croatia • Malta • Slovenia • Bulgaria • Romania 	<p>SOUTHEAST ASIA</p> <ul style="list-style-type: none"> • Thailand • Cambodia • Singapore <p>CORAL TRIANGLE</p> <ul style="list-style-type: none"> • Philippines • Malaysia • Indonesia • Timor-Leste • Solomon Islands • Papua New Guinea <p>SOUTH PACIFIC</p> <ul style="list-style-type: none"> • France (French Polynesia) • Federated States of Micronesia • Kiribati • Palau • Fiji <ul style="list-style-type: none"> • Madagascar • Seychelles • Japan • South Korea • Chile • Argentina • Bahamas • Barbados
<ul style="list-style-type: none"> • Australia (5 Bioregional Plans Covering Entire EEZ) • Germany (North Sea EEZ, Baltic Sea EEZ, and 3 State-level Plans Covering Territorial Sea) • USA (Rhode Island and Oregon State Waters) • China (9 Provincial-level Plans Covering Territorial Sea) • Canada (Beaufort Sea) 		
<p>Countries that Have Completed, but Not Approved Spatial Plans</p>		
<ul style="list-style-type: none"> • Portugal (Continental EEZ only) • England (Inshore and Offshore East Regions) • Norway (North Sea) 	<ul style="list-style-type: none"> • Israel • South Africa • Vietnam • New Zealand • Brazil • Mexico (Gulf of Mexico & Pacific EEZs) • Costa Rica • Bermuda 	

Daži piemēri - Anglija

Marine Plan Areas in England



0 50 100 150 200 250 Km

This map has been produced using the ETRS89/ETRS datum (2011) coordinate reference system.

Contains Ordnance Survey and UK Hydrographic Office data © Crown copyright and database right 2012. Marine Management Organisation.

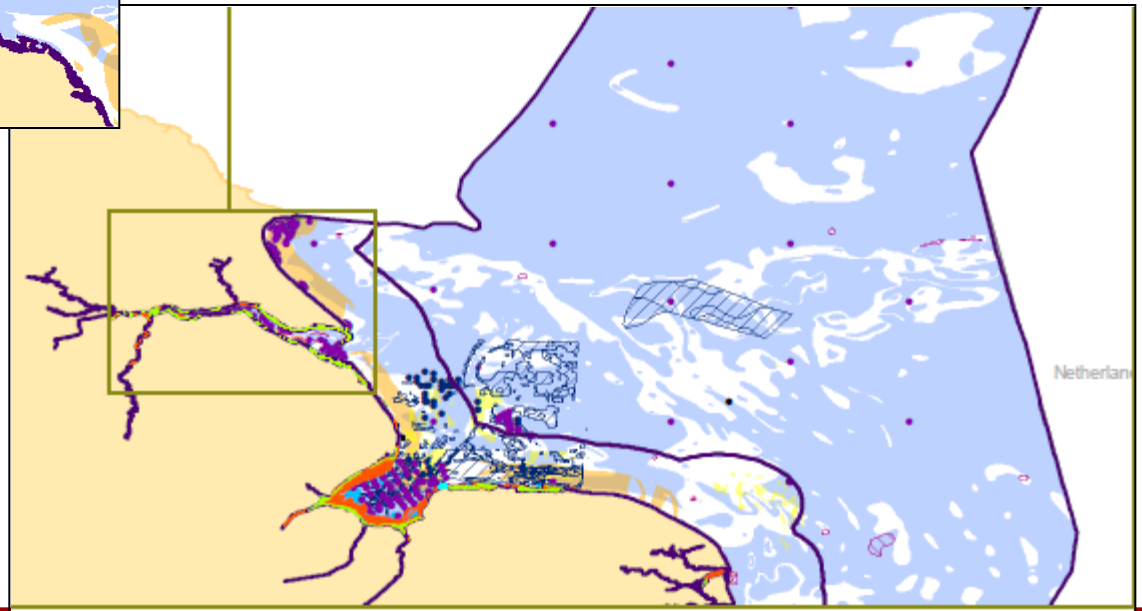
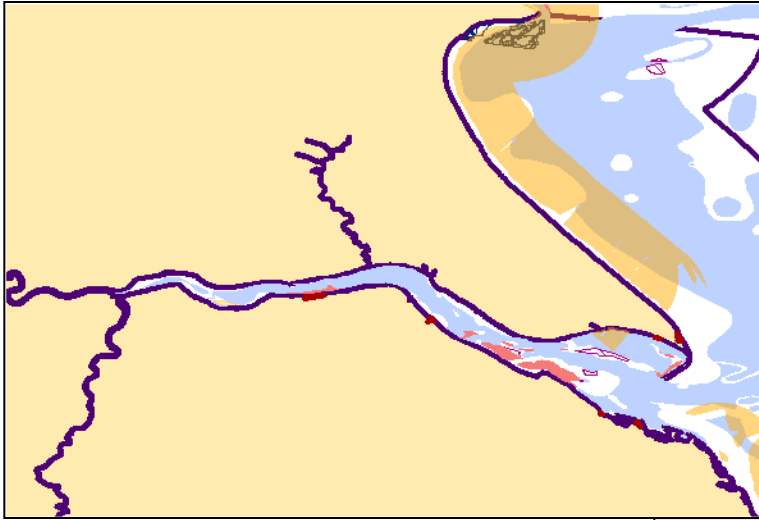
- 1 - North East inshore
- 2 - North East offshore
- 3 - East inshore
- 4 - East offshore
- 5 - South East inshore
- 6 - South inshore
- 7 - South offshore
- 8 - South West inshore
- 9 - South West offshore
- 10 - North West*

*The North West area is shown as a single area (indicated by a dashed line) to reflect the recommendation that the inshore and offshore areas be prepared under a single process.
Plan area boundaries are identified as defined following the public consultation on the plan areas and are indicative with further refinement expected as the marine planning process is implemented.

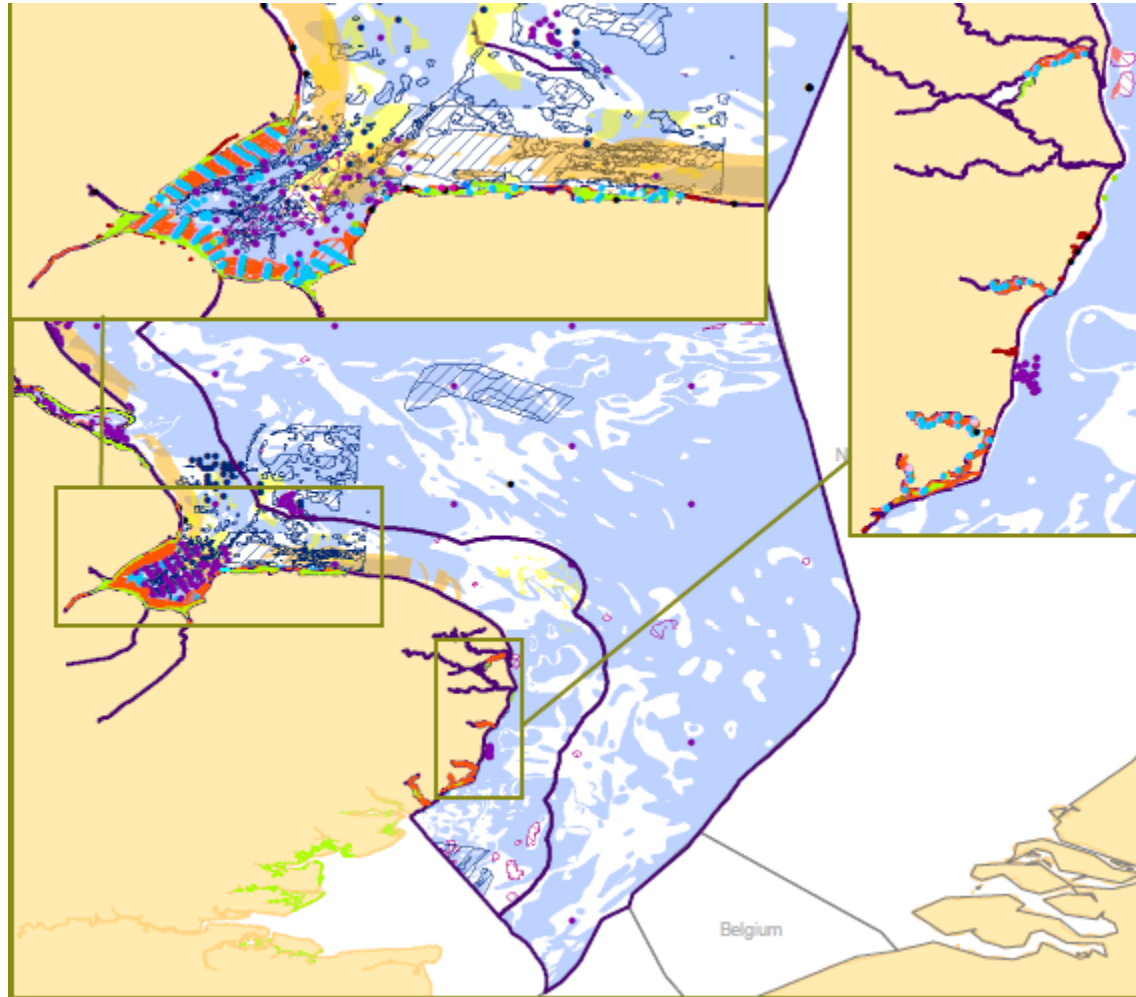


- Sadalīti 11 teritorijās
- Izstrādāt 3 plāni
- <http://www.marinemanagement.org.uk>

Bioloģiskās vērtības



Bioloģiskās vērtības



Vietējā līmeņa pašvaldības



Figure 10: Local authority areas and county councils

May 2013

INFORMATION MAP- This map provides supporting information for section 3.5. The reader should check for any updates via the link provided in paragraph 79.

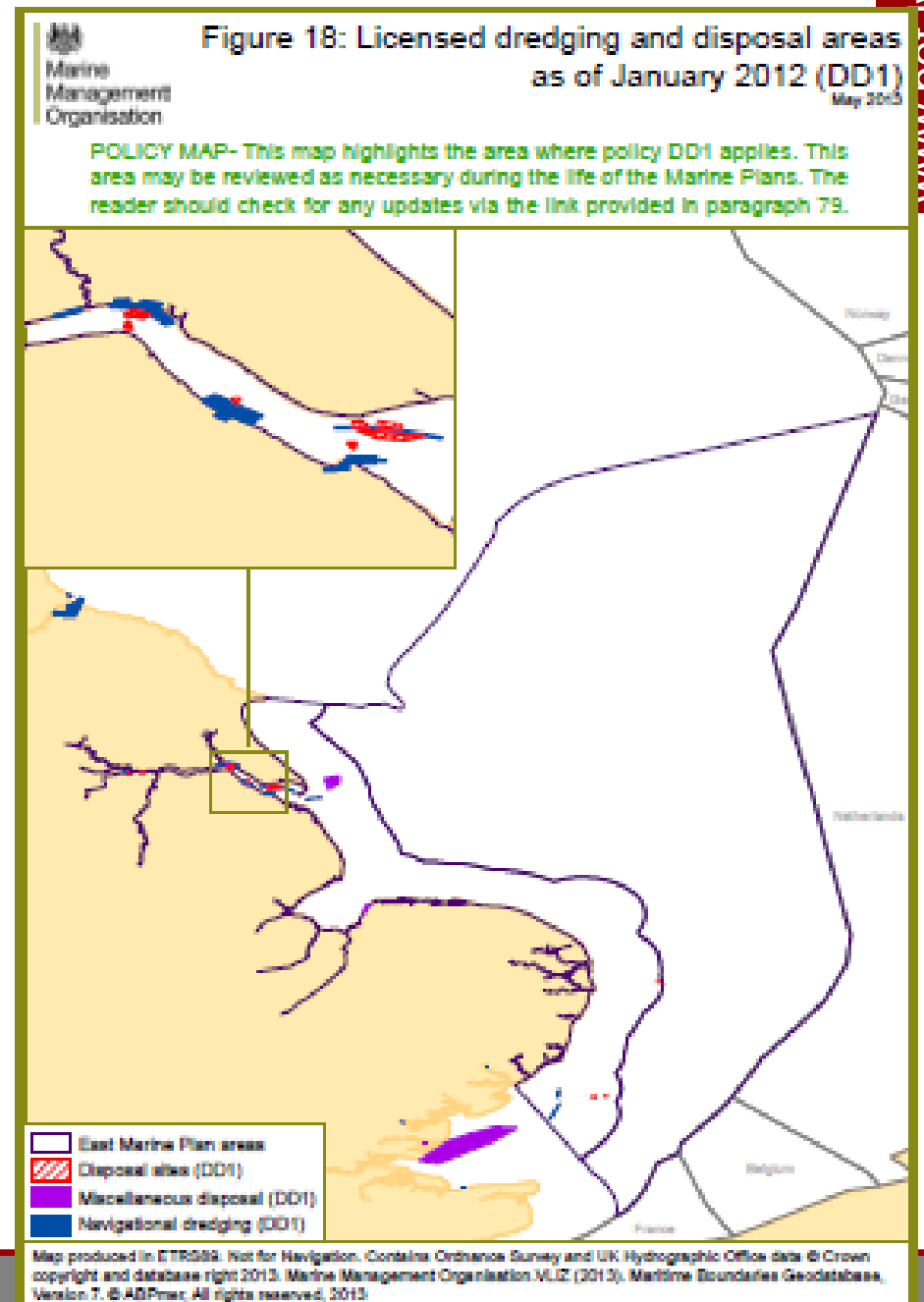


East Marine Plan Area
 County Councils
 Local Authorities

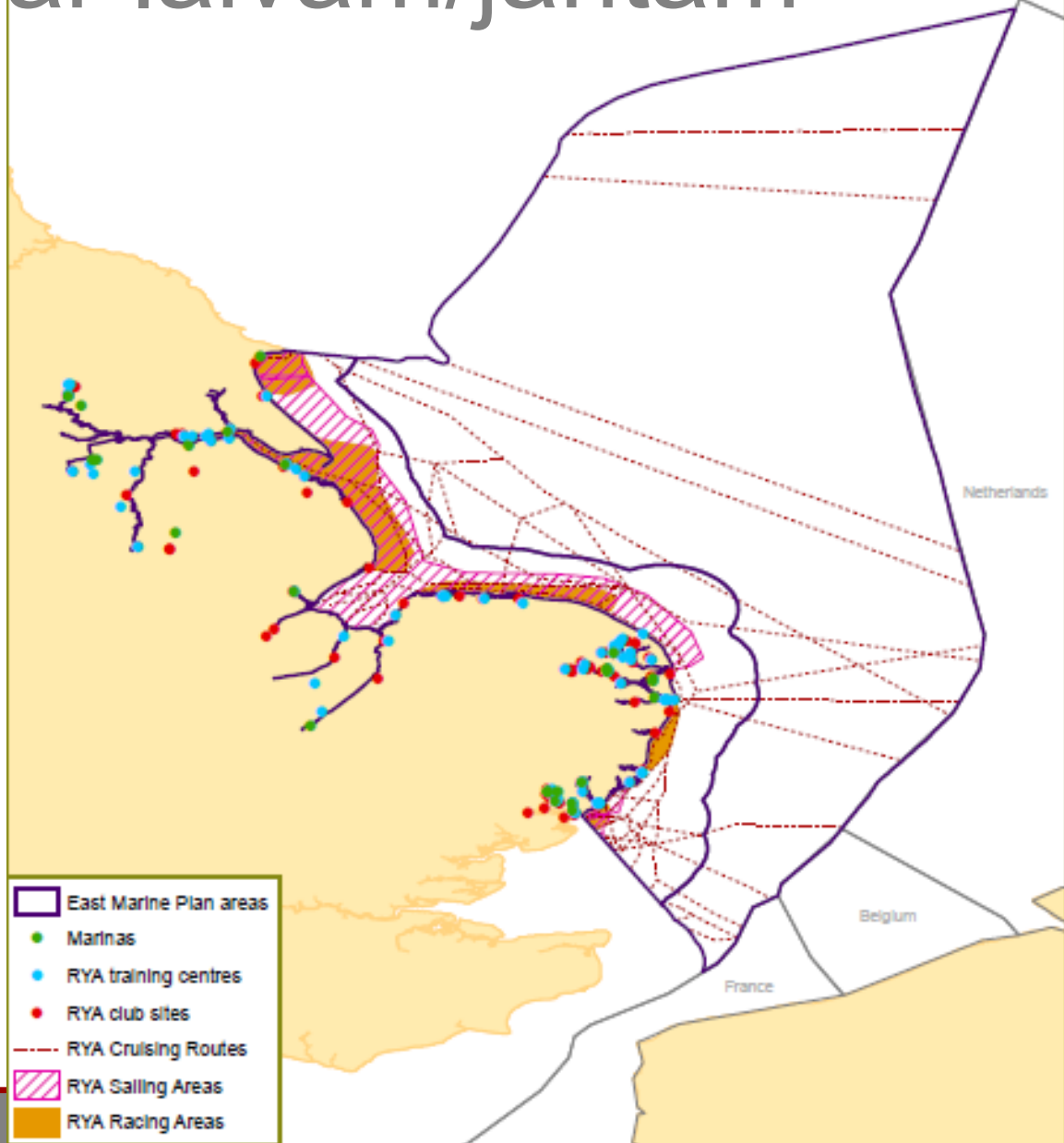
Map produced in ETRS89. Not for Navigation. Contains Ordnance Survey and UK Hydrographic Office data © Crown copyright and database right 2013. Marine Management Organisation. VLIZ (2013). Maritime Boundaries Geodatabase, version 7. © Crown Copyright. All rights reserved 2013



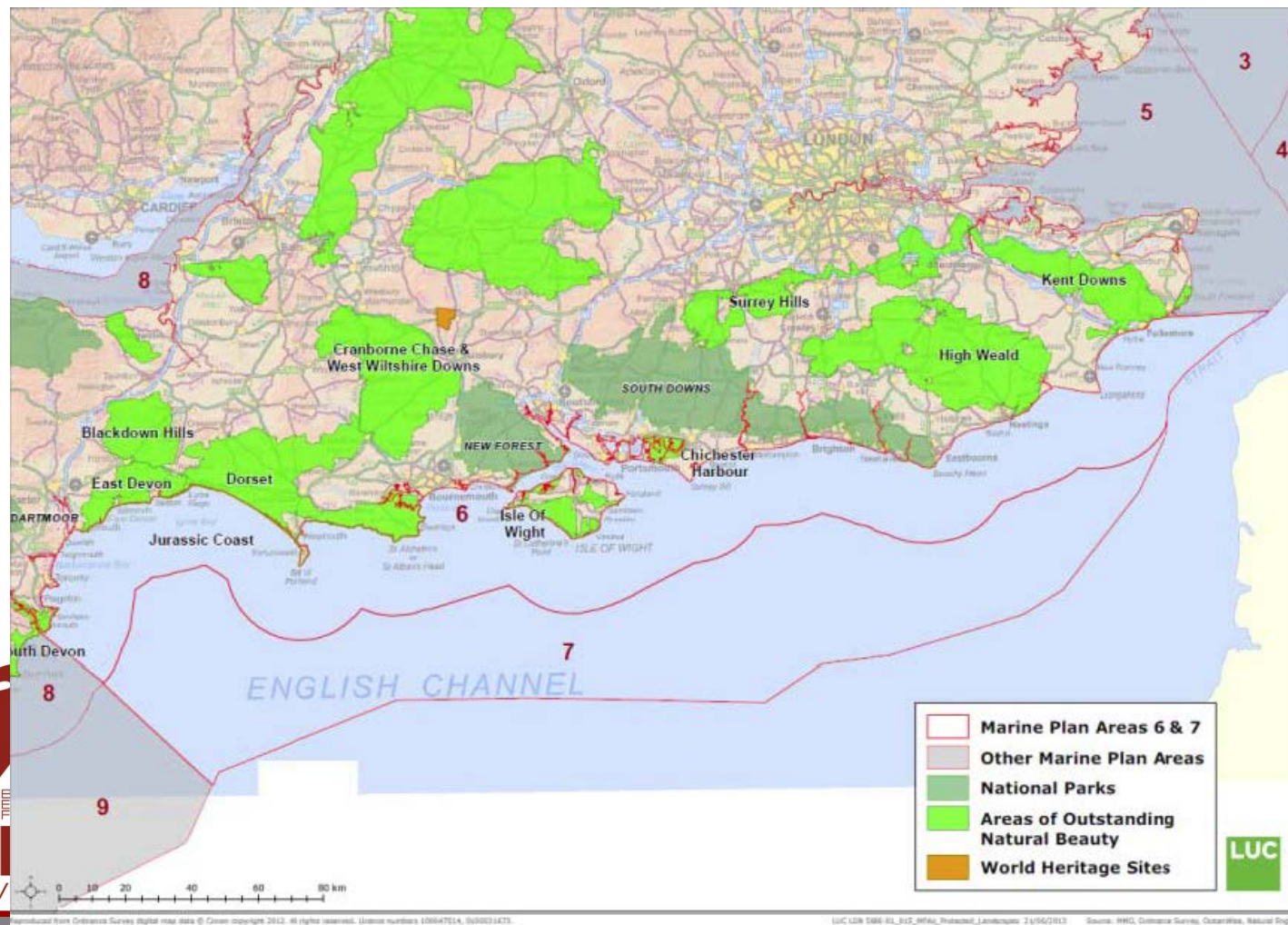
- Grunts glabātuves



Tūrisms ar laivām/jahtām

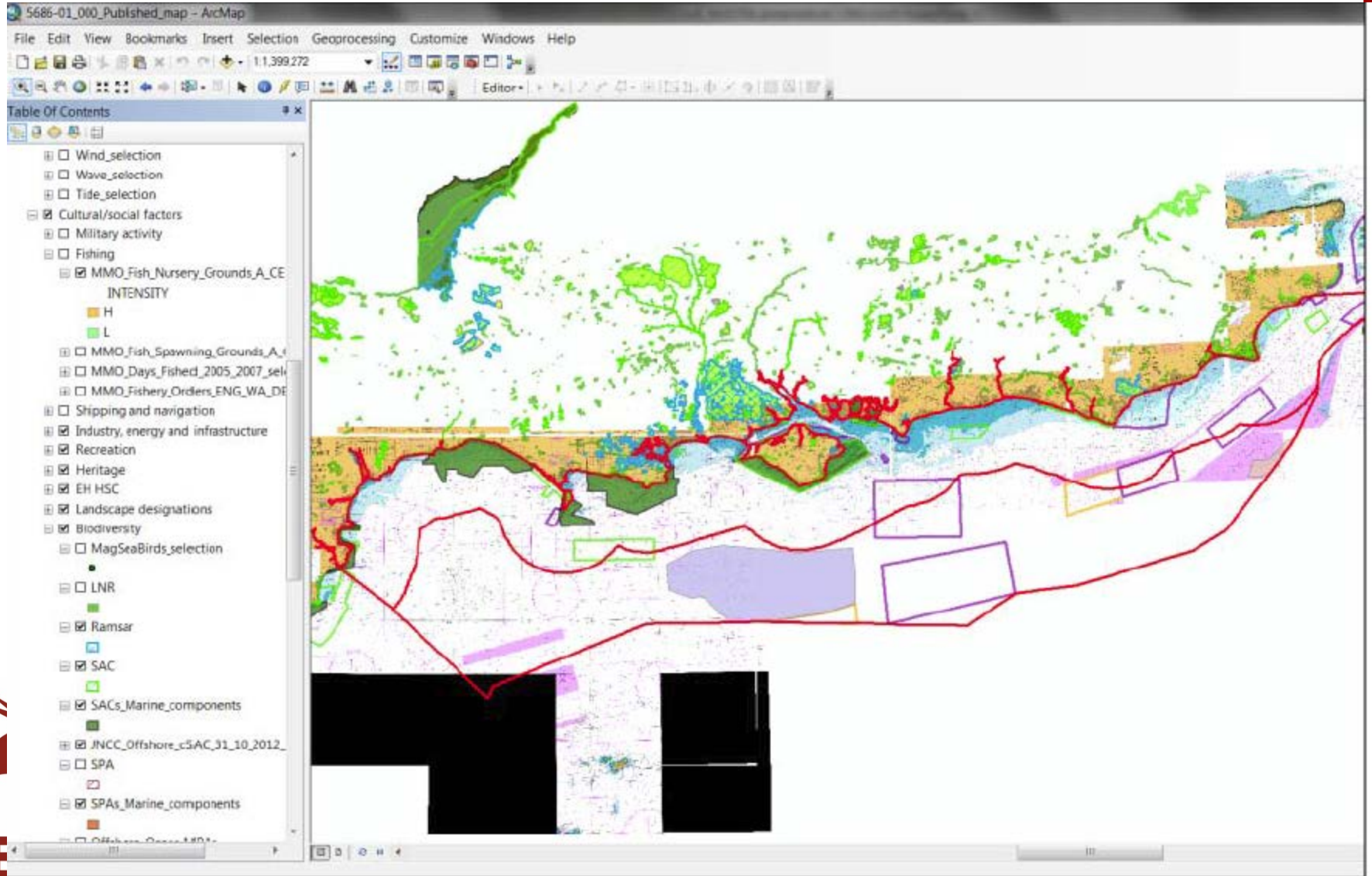


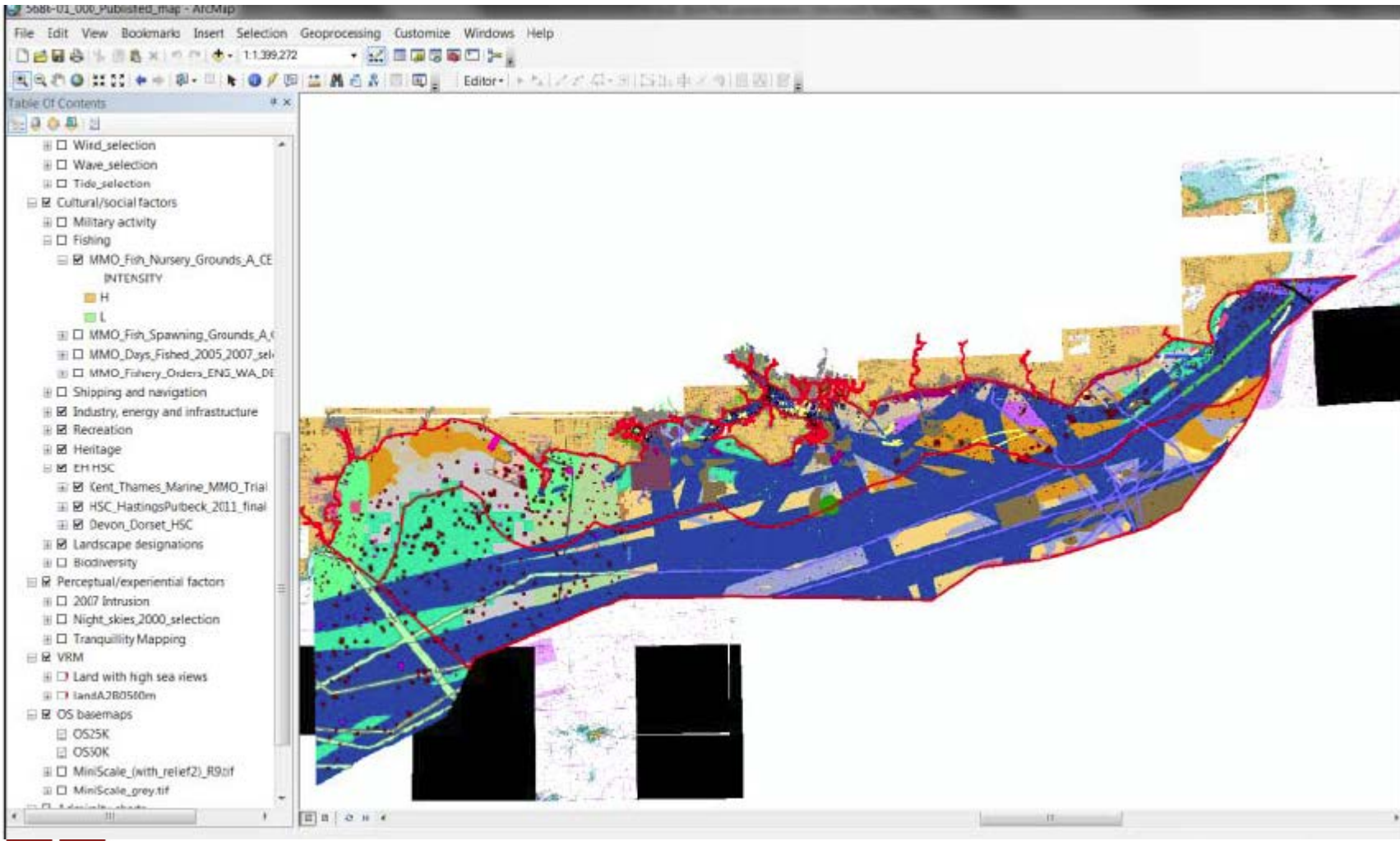
Jūras ainavas novērtēšana



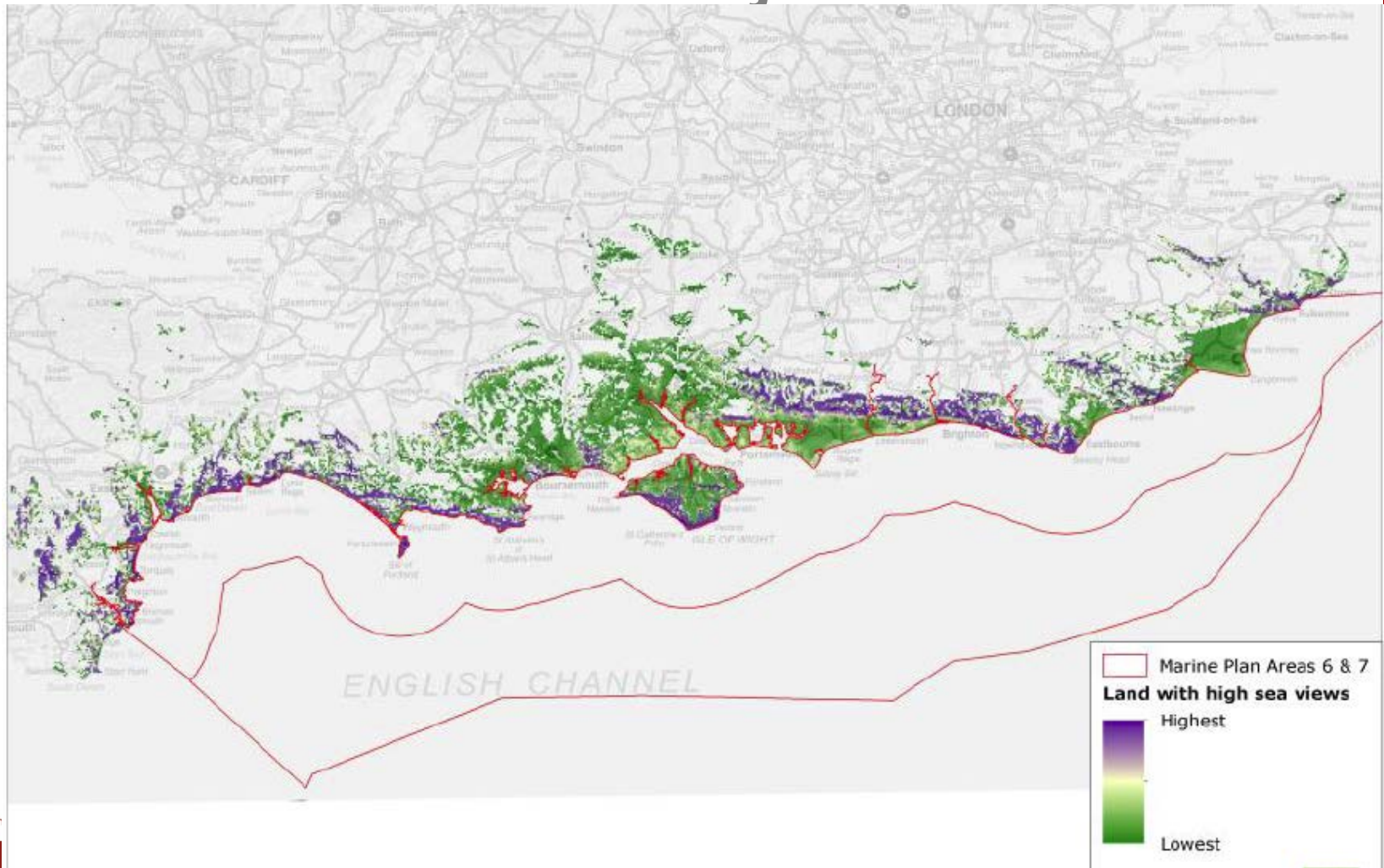
Reproduced from Ordnance Survey digital map data © Crown copyright 2012. All rights reserved. Licence numbers 100047614, 500021473.

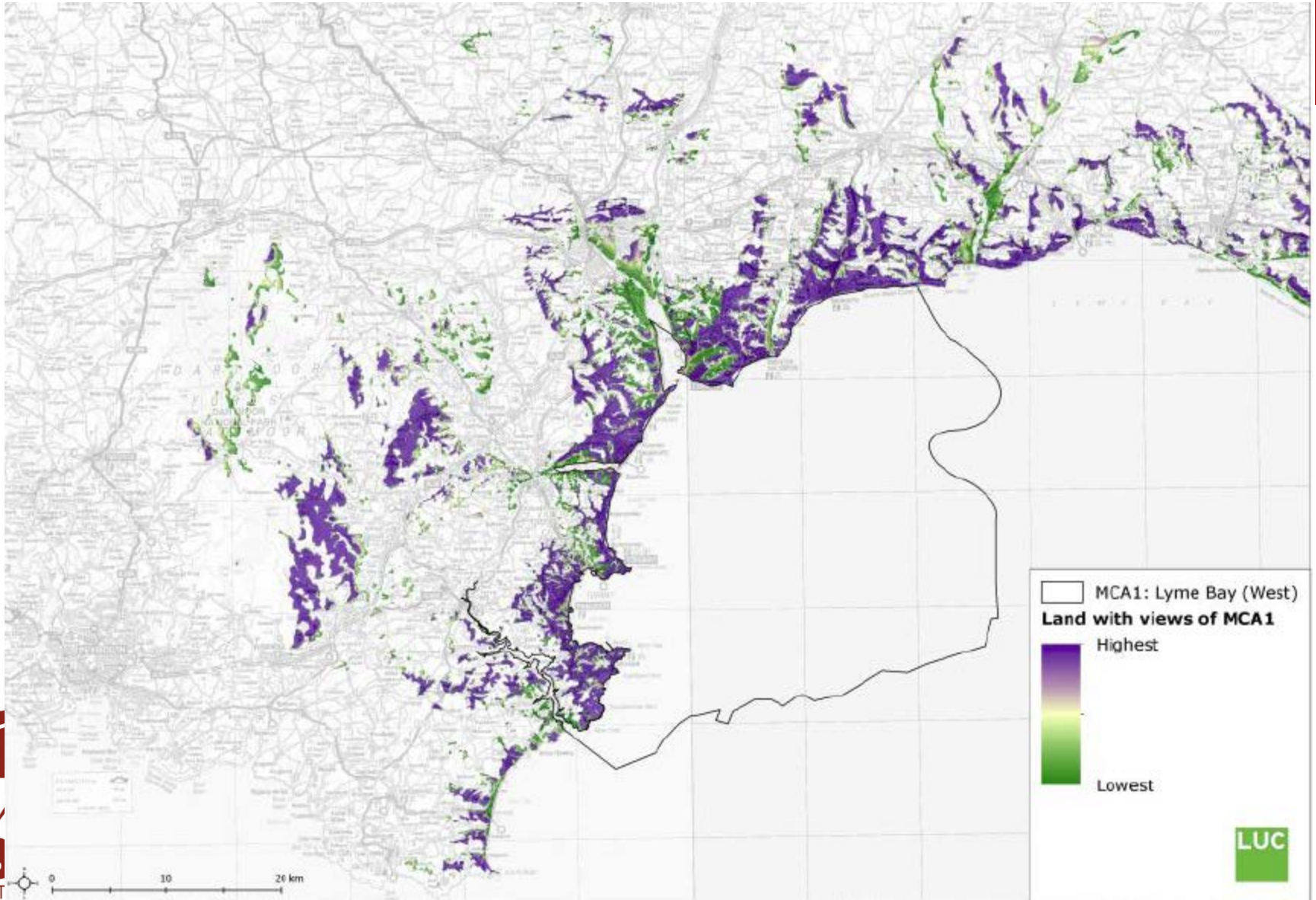
LUC L2B T8B-EL_EIS_MPA_Protect_Landscape 21/06/2013 Source: RMC, Ordnance Survey, Coastlines, Natural England



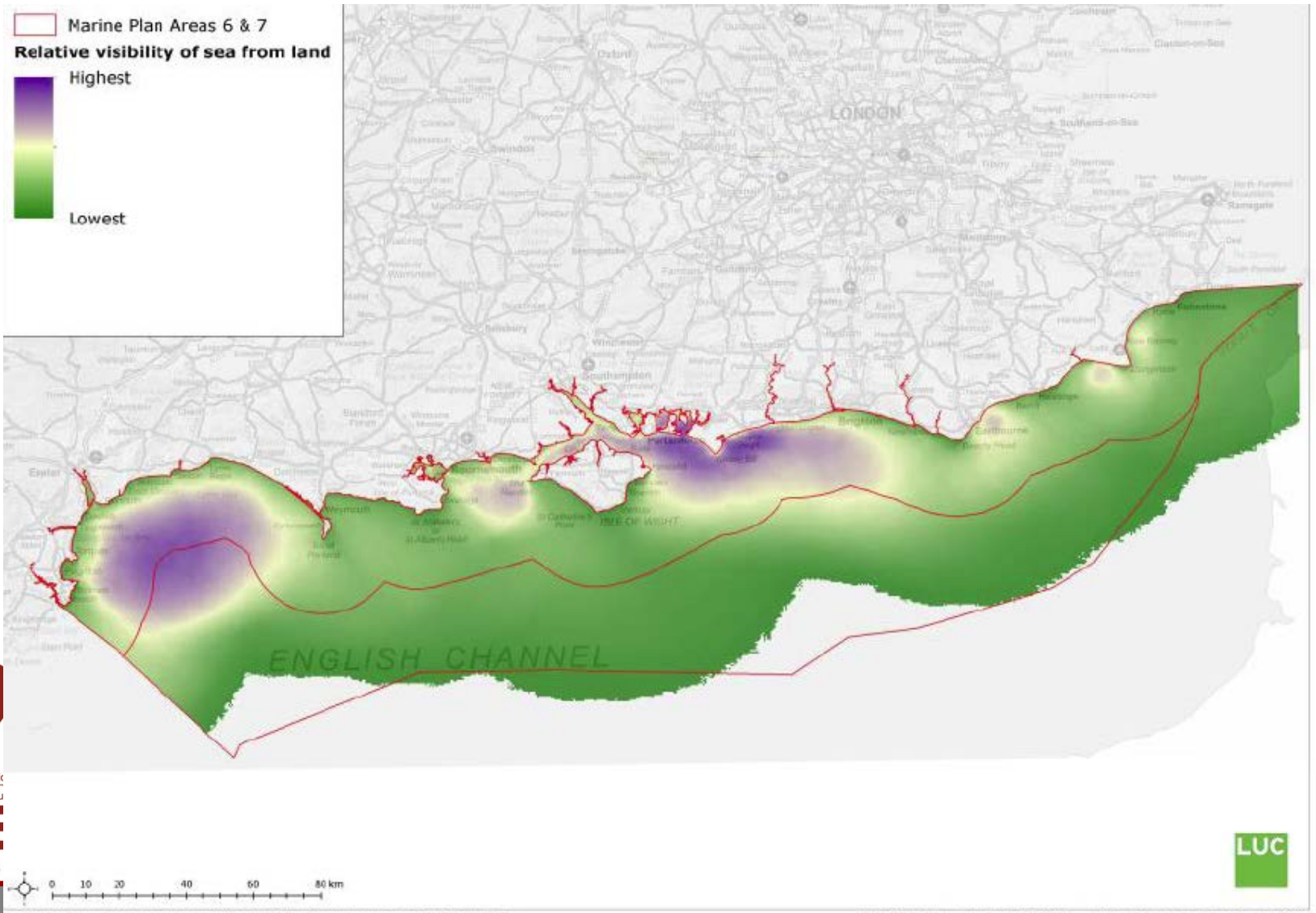


Skats no jūras





Skats no sauszemes

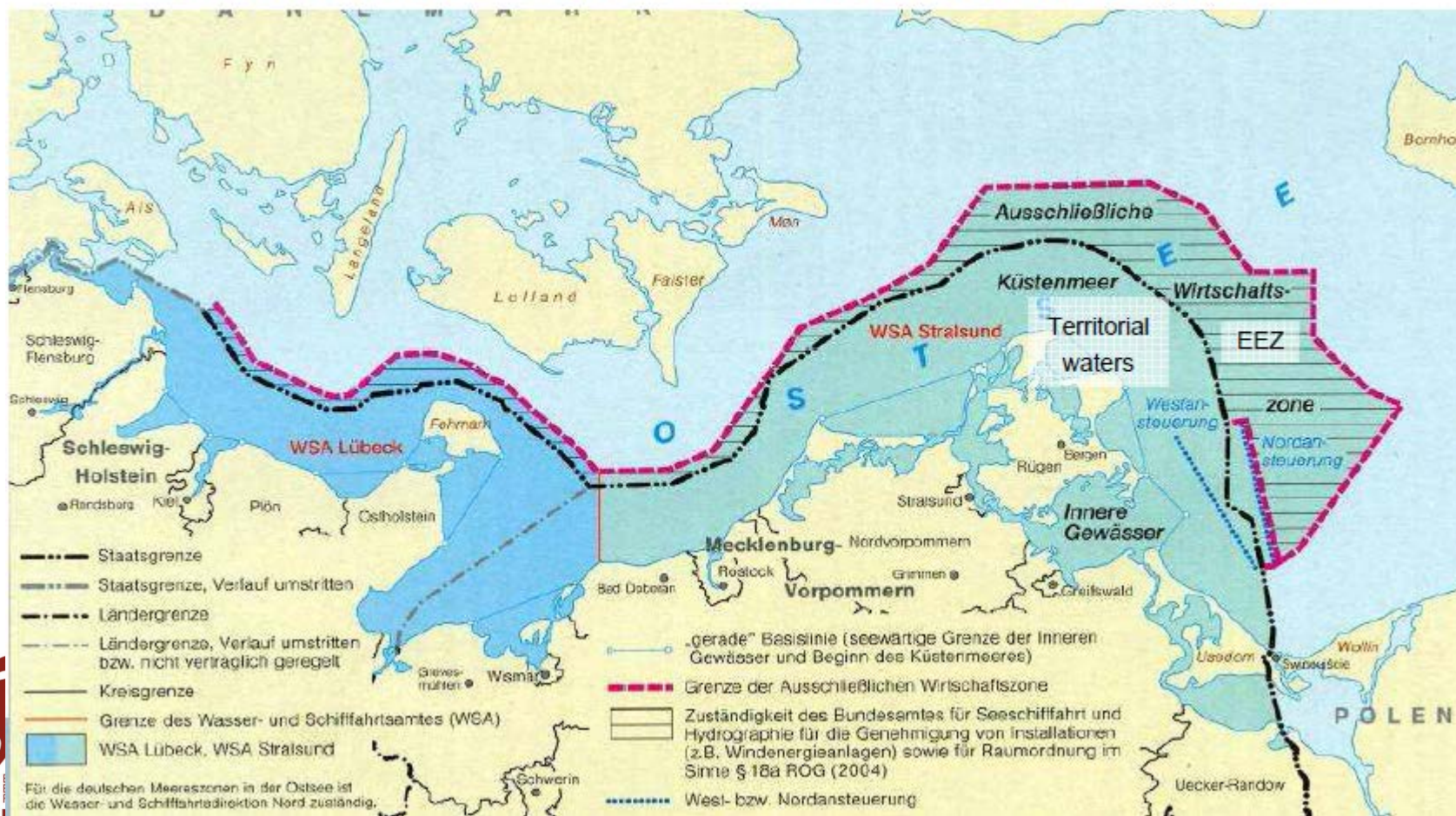


Vācija: Federālās zemes plāni

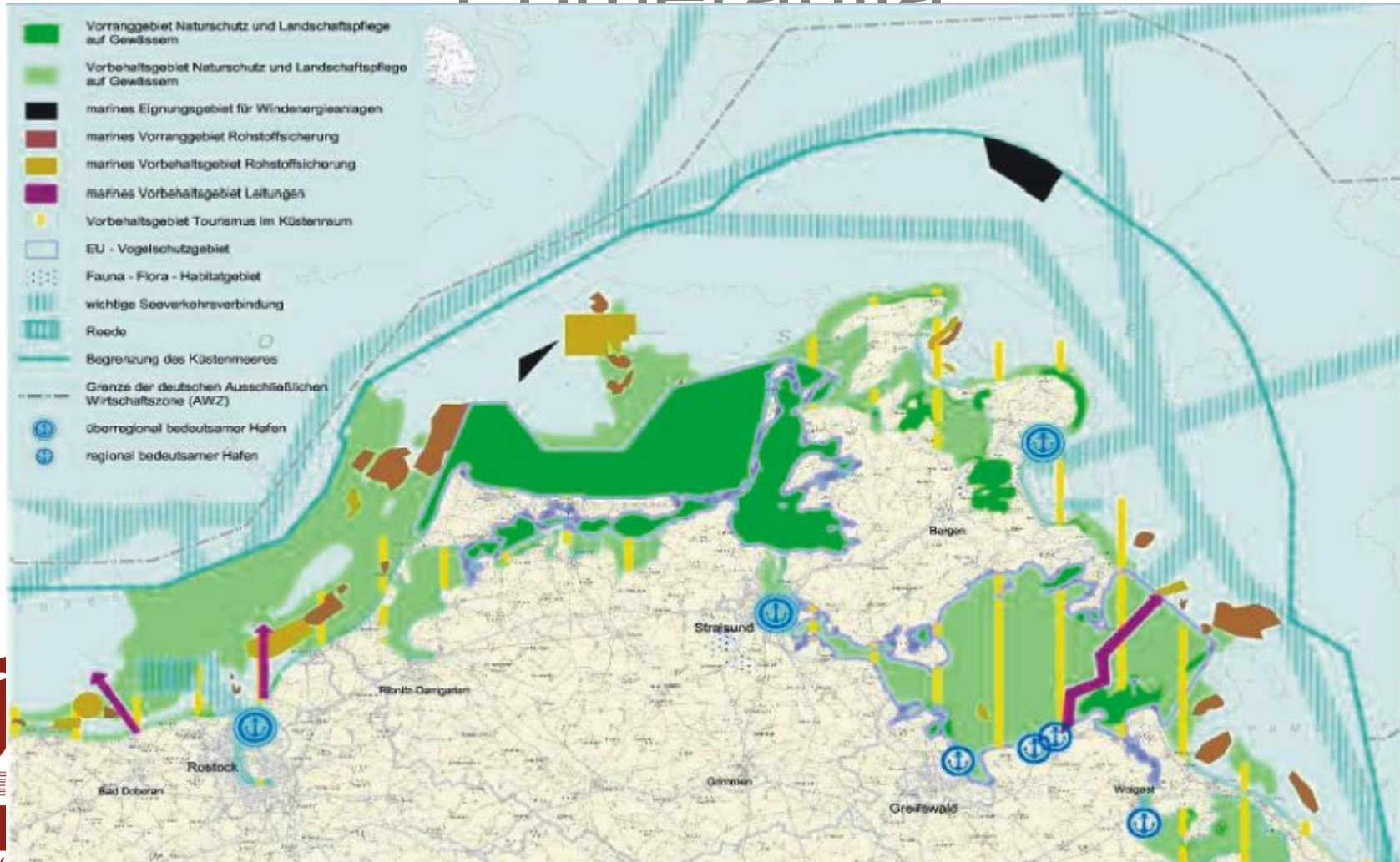
- Plāno teritoriālos ūdeņus, 12 jūras jūdzes
- Ziemeļjūrā - Lejas Saksija (2000) un Šlesviga-Holšteina
- Šlesviga-Holšteina un Meklenburga – Rietumu Pomerānija (2005) – Baltijas jūrā:
 - Izdala 3 zonas (prioritārās teritorijas, rezerves teritorijas un teritorijas piemērotas konkrētām aktivitātēm)

Meklenburga – Rietumu Pomerānija

Administrative Borders of Germany in the Baltic Sea



JTP Meklenburga – Rietumu Pomerānija



Piemēri no Baltijas jūras reģiona

- Zviedrija– rajonu plāni
- Somija– pētnieciskais projekts par klimata pārmaiņām un JTP
- Lietuva– plānošanas hierarhija (no nacionālā vispārējā plāna līdz JTP)

Paldies!

